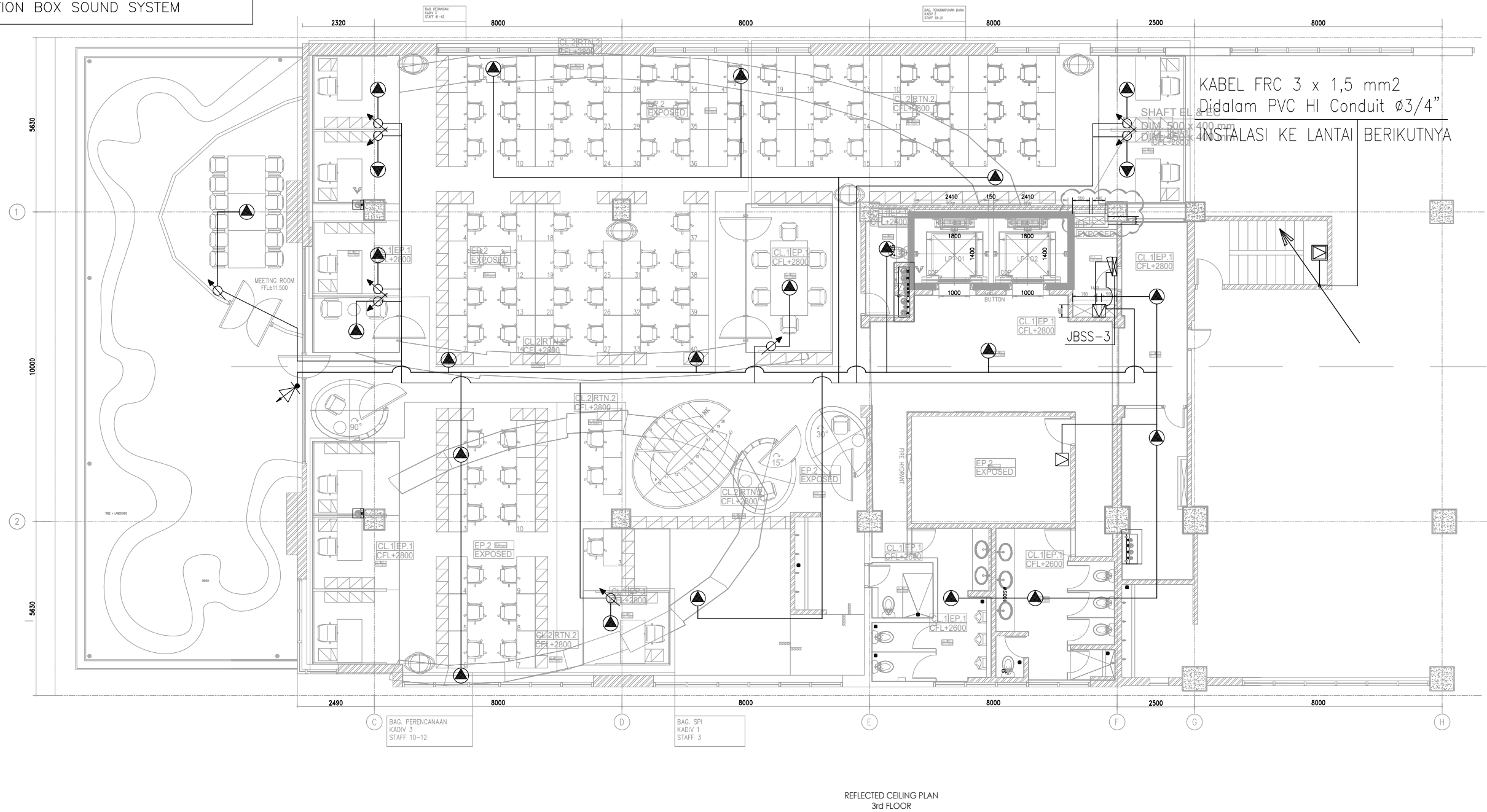









KETERANGAN	
	CEILING SPEAKER (EVAC) 3 WATT
	WALL SPEAKER 6 WATT
	WALL SPEAKER HEAT RESISTANT 6 WATT
	VOLUME CONTROL
JBSS	JUNCTION BOX SOUND SYSTEM



REFLECTED CEILING PLAN
3rd FLOOR

<div>OWNER/CLIENT</div> <div></div> <div>APPROVED : .../.../...</div> <div><div>..... (name)</div><div>..... (position)</div><div>(signed) (Dep./Div.)</div></div>	<div>PROJECT</div> <div>BPDP KELAPA SAWIT</div> <div>Jl.Medan Merdeka Tim, RT.7/RW.1, Gambir, Kec. Gambir, Kota Jakarta Pusat, Daerah Khusus Ibukota Jakarta 10110</div>	<div>INTERIOR DESIGN CONSULTANT</div> <div>PT.MADEA AGKASAMA</div> <div>Jl. Hati Suci No. 4 Gd. Sakura Lt. 2 Room 201 Kel. Kampung Bali, Kec. Tanah Abang, Jakarta Pusat Telp. 021 - 2303483 , Fax. 021 - 2303483 APPROVED : //</div>	<div>MEP CONSULTANT</div> <div><div>PT.DUTA PRATAMA ENGINEERING MECHANICAL & ELECTRICAL ENGINEER</div><div>Rukan Taman Meruya Blok M No. 37, J. Batu Mulia No. 1 Meruya Utara Kembangan - Jakarta Barat 11620 Phone : 021-5845546, 5845547, 5845556, Fax : 021-58474531 Email : dpeptme@gmail.com, ptidpe.me@yahoo.com</div></div>	<div>DRAWING TITLE</div> <div>DENAH INSTALASI SOUND SYSTEM LANTAI 3</div> <div>SCALE : 1:150</div> <div>ALL MEASUREMENT MUST BE CHECKED AT BY SITE BY THE CONTRACTORS AND ANY DIFFERENCES REPORTED/INITIATED TO THE DESIGNER FOR CLARIFICATION BEFORE PROCEEDING.</div>	<div></div> <div>...</div>	<div>DRAWN</div> <div>Denny</div> <div>DATE : 15/05/24</div>	<div>DRAWING NUMBER</div> <div>EC-304</div>
				<div></div> <div>...</div>	<div>CHECKED</div> <div>Widodo</div> <div>DATE : 15/05/24</div>	<div>PAGE</div>	
				<div></div> <div>...</div>	<div>DRAWING FOR</div> <div>TENDER</div> <div>DATE : 2024/05/10</div>		
				<div></div> <div>...</div>			
				<div></div> <div>...</div>			
				<div>#</div> <div>REVISION :</div>	<div>DATE</div>		